

The image features two round glass fishbowls on a light blue surface. The bowl on the left contains a single goldfish swimming near the bottom. The bowl on the right contains a single goldfish swimming near the surface. A large splash of water is captured mid-air, with a goldfish leaping out of the left bowl and entering the right bowl. The background is a plain, light blue gradient.

Project Risk Management

Better Safe than Sorry

Learning Points

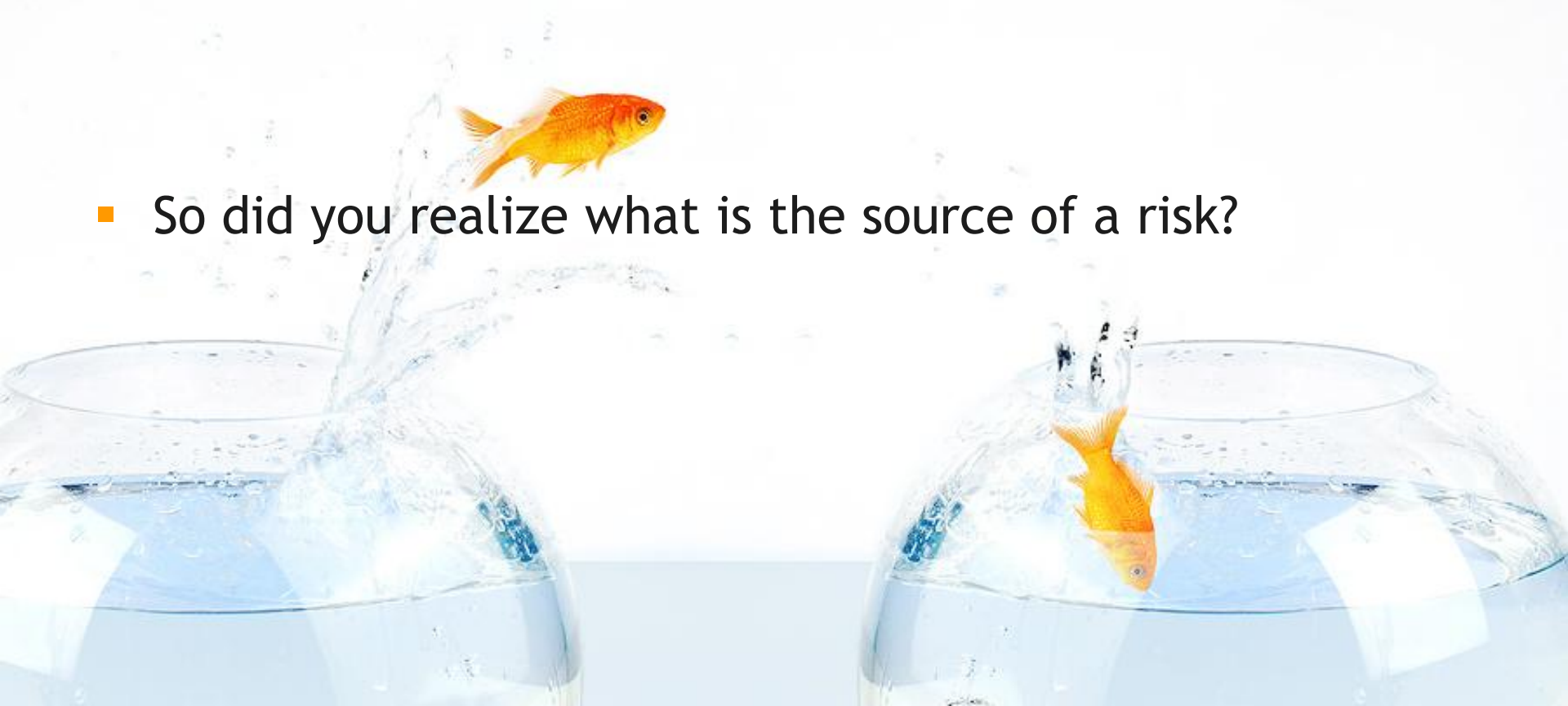
- What is the source of a risk?
- Risk Identification - Positive and Negative risks
- Risk Categories
- Risk Statement
- Risk Analysis and Prioritizing
- Risk Response Planning
- Risk monitoring and Control
- Risk management tool



What is the source of a risk?

- Let's enact a drama

- So did you realize what is the source of a risk?



Risk Identification Techniques

- Let's identify the risks in our model project using these techniques (at least two risk through each technique)
 - Documentation reviews
 - Interviewing team and experts
 - Delphi Technique
 - Brainstorming
 - SWOT Analysis
 - Assumptions Analysis
 - Diagramming Techniques

